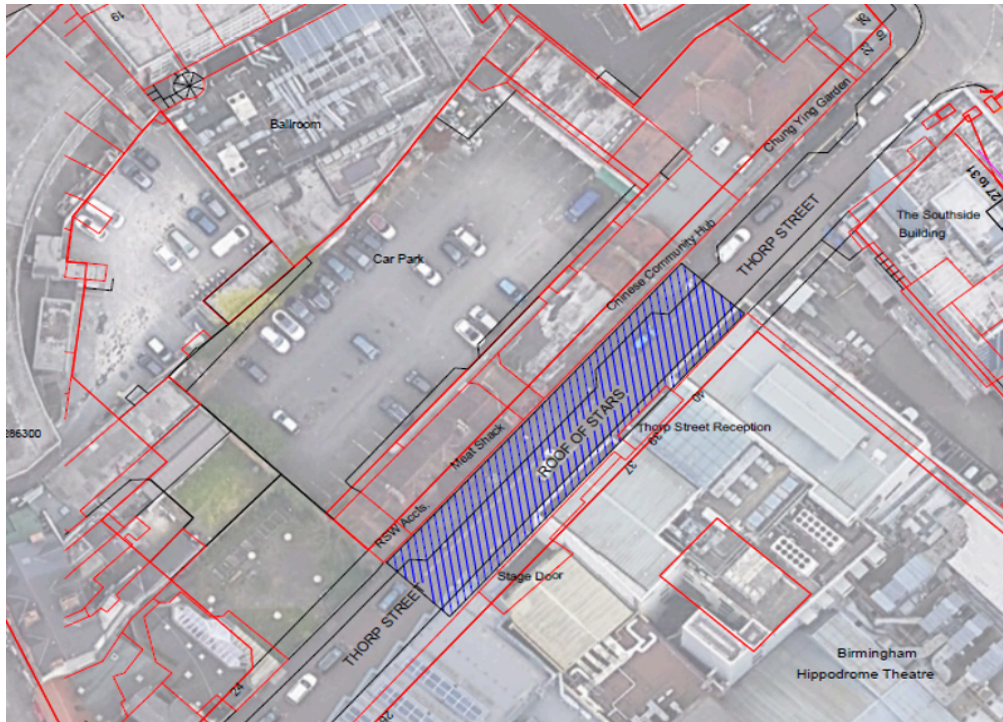


**Project 1: Roof of Stars**

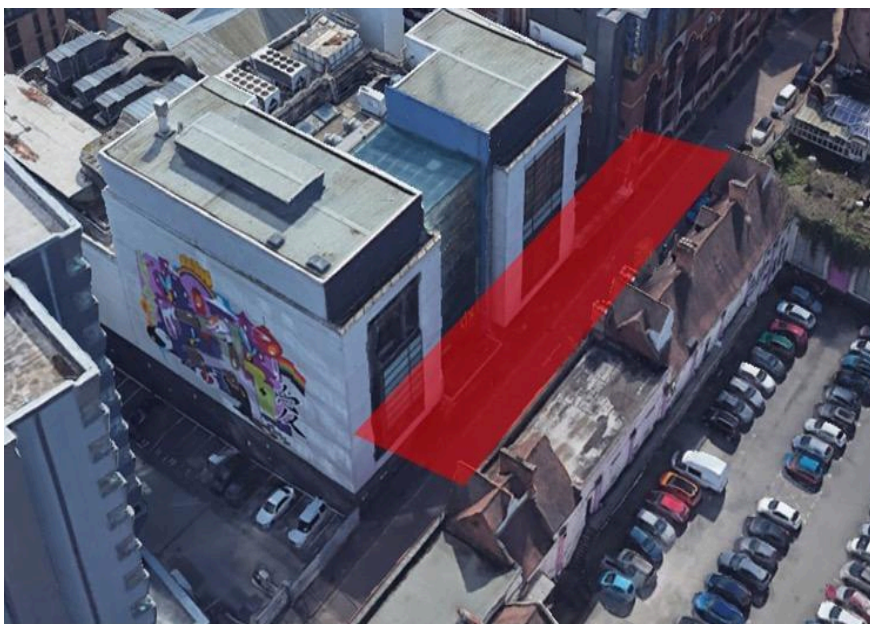
**Client:** Southside BID (in collaboration with Birmingham Hippodrome)

**Location:** Thorp Street, B5 4AT - suspended across the street. with adequate highways height clearance and fixations on Birmingham Hippodrome and Chung Ying Gardens buildings

**Plan:**



**Accompanying imagery:**





### **Artistic Vision:**

*The Roof of Stars should create a sense of place on Thorp Street which is home to both Birmingham Hippodrome Stage Door and Birmingham Royal Ballet. The 'stars' of productions use this entrance regularly, and this is the inspiration for the creative concept.*

*We are looking to animate Thorp Street with light - we want to create a more welcoming area. A space that feels safer and better reflects the hub of creativity on this road. We are looking for a design concept that does not conjure thoughts of Christmas as this installation will be in situ year-round.*

For all our commissions we have a number of key pillars that guide all work related to Birmingham Light Festival:

**PLACE:** We will connect audiences with the city in a positive, creative, and playful way through light art that makes connections with Birmingham; its heritage, its USPs and its people.

**ECONOMIC:** We want to encourage curiosity and creativity - driving footfall and increasing spend in local businesses.

**COLLABORATIVE:** A festival with collaboration at its heart, with City Centre BIDS uniting alongside both private and public partners to deliver the best for the city.

**ACTIVE:** Artworks will all be within walking distance of one another, showcasing Birmingham as a walkable city and encouraging visitors to actively explore the city centre.

**SOCIAL:** Some artworks will be participatory, encouraging social experience – enhancing community cohesion and human connection.

**SAFE:** We will use the first year of the festival to explore how we can improve perceptions of safety through light.

**INCLUSIVE:** Light art is accessible to all and resonates with a wider audience.

**SUSTAINABLE:** Working in an environmentally sustainable way across all areas of the festival, including using sustainability as a criteria for commissions

**LEGACY:** Working with partners to brightening and enhance city spaces more permanently over time

### **Additional Requirements:**

#### Further detail on Sustainability:

The Roof of Stars should place sustainable practices at the heart of the project.

We understand that using light will have a general effect on light pollution however ask applicants to consider:

- The luminosity of fixtures to avoid excessive light while still creating a great effect
- Colours used within the design (avoid blue and violet colours – use warmer colours)
- Reducing skyglow by using limited fixtures that project light above the installation
- Using light only when needed – using dawn/dusk sensors or timers within specific fixtures
- The use of materials for long term usage / long life lamp fixtures

As part of this project Birmingham Hippodrome will be providing a grid electricity connection for the project and will work with the successful organisation to explore the most appropriate methods for sensors and timers to ensure that the duration the light is displayed can be controlled and minimised to avoid unnecessary light pollution in daylight hours.

Consideration should be given to the use of local suppliers for the supply of fixtures.

#### Further detail on inclusivity:

The Roof of Stars should be designed with universal accessibility in mind, ensuring people of all abilities can engage with and enjoy the project, this should be incorporated into planning.

Consideration should be given to the brightness of fixtures and colour temperatures to avoid creating glare issues for the public when using the street.

#### Further technical specification:

Consideration must be given to

**Weather Resistance:** All components should be designed to withstand outdoor environments (rain, wind, snow, etc.) and have a lifespan of a minimum of three years. Fixtures should have an IP67 rating or above and suitable wind certification available.

**Flashing Colours:** Consideration should be given to flashing / light sequences within the design, particularly avoiding the use of red or blue flashing fixtures to comply with restrictions around light decorations above or nearby to a highway.

**Fixings within Design:** It is envisaged at this stage the manufactured components will be installed on a catenary wire system that will span between the buildings. Fixtures should be able to be attached securely to this system with secure attachment methods with rated accessories.

**Installation:** A third party contractor is planned to be appointed for installation of the project including catenary wire system - however the design of this system will be informed by the chosen design commission and there will be a collaborative approach within planning to ensure effective implementation.

**Planning Permission & Highways Approval:** This project is subject to planning and highways review, depending on the details of the project it may be necessary for the project team to obtain planning permission. The project team will work with the successful organisation to further scope the project to ensure compliance with regulations and guidance

**We invite proposals from experienced designers, manufacturers and fabricators to design and manufacture a 'roof of stars.'**

**Budget Range:** We are inviting quotes up to £20,000 (this project has match funding, not the larger budget)

*Inclusions: All costs relating to design and manufacturing*

*Exclusions: Site preparations, planning & permits, installation and ongoing costs*